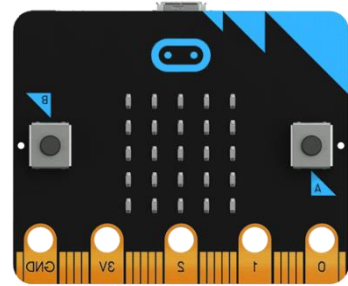


buttons & animations

Today we will code the micro:bit buttons and display images and animations on the micro:bit LEDs.



Definitions

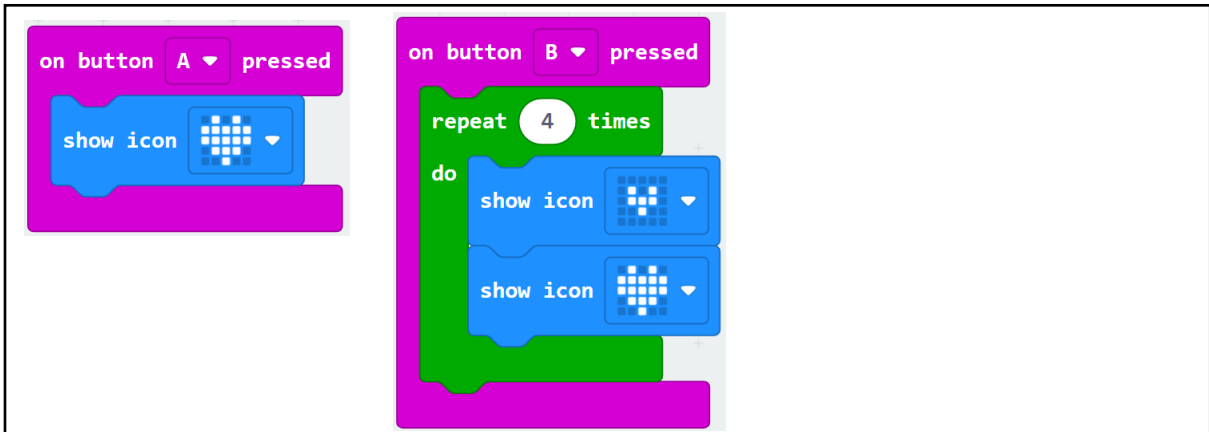
Button : an input device you press to send a signal to the device.

Light Emitting Diode (LED) : A semiconductor light source that emits light when an electric current flows through it.

Animation : a series of images when view quickly produce the illusion of motion.

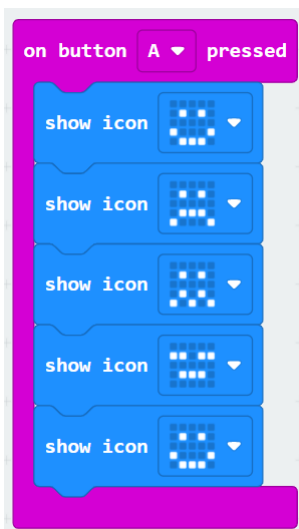
Hello Buttons

The micro:bit has two buttons on the front, **A** and **B**, and one button on the back, **Reset**.

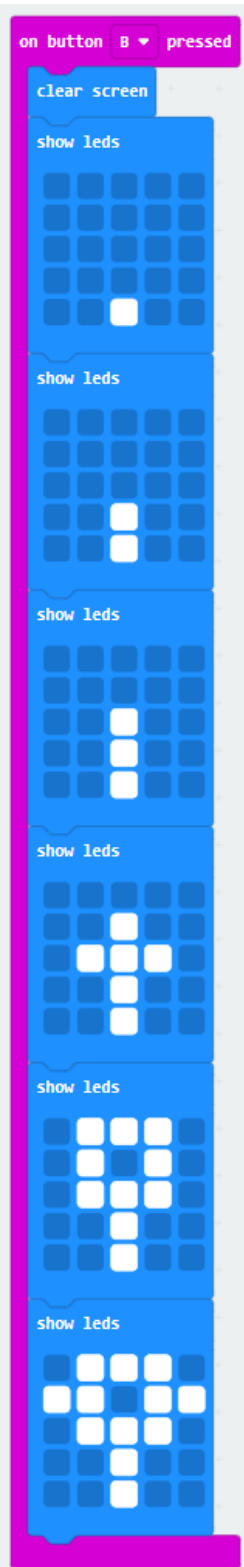


Animations

Faces



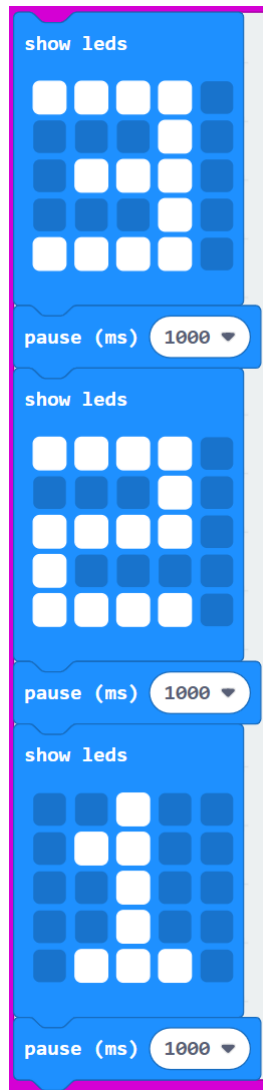
Flower Growing



Fireworks



Count Down



Person Waving

